



**WINTERSTOKE  
HUNDRED  
ACADEMY**

# Behaviour Policy

October 2022

**Board Approved: October 2022  
Review Frequency: Every 3 years  
Date of Next Review: October 2025**



**Cabot  
Learning  
Federation**

# Contents

Introduction.....	3
Aims .....	3
Behaviour Policy Aims: .....	3
Conduct around the academy .....	4
Conduct in lessons .....	4
Behaviour management flow chart .....	5
Behaviour out of school .....	6
Students are expected to.....	6
Sanctions for behaviour offsite.....	6
Rewards.....	6
Sanctions: .....	6
Detentions .....	7
Community Service.....	7
Confiscation .....	7
Fixed Term Exclusion .....	8
Permanent Exclusion .....	8
Bullying.....	9
Homework.....	9
Homework sanctions.....	9

## **Introduction**

We aim high at Winterstoke Hundred Academy; we expect high standards of behaviour and academic effort from all of our pupils. We enable our pupils to develop the habits of selfdiscipline and perseverance so they will appreciate that success needs hard work. Our school ethos strives to create a safe learning environment in which all students are empowered to be themselves. Our expectation is that all students and staff will behave in appropriate and socially acceptable ways. Every member of staff has a key role to play in promoting and sustaining the highest standards of behaviour and learning.

Our ethos is based on three primary rules:

- 1) Be Safe**
- 2) Be Kind**
- 3) Work Hard**

### **Aims:**

- to ensure that all students, parents/carers, staff and governors are aware of the high expectations of Winterstoke Hundred Academy in terms of Behaviour for Learning;
- to promote good behaviour through good conduct, self-discipline and respect;
- to create a safe learning environment;
- to encourage enthusiasm for all aspects of learning, creativity and academic success;
- to embrace difference, encourage acceptance and challenge prejudice;
- to prepare students to become responsible adults;
- to raise attainment and achievement for every individual so that they can achieve their full potential

### **Behaviour Policy Aims:**

- to create a welcoming and orderly atmosphere, both in classrooms and on the academy site, which enables all members of the academy community to learn effectively and feel valued and respected;
- to promote good behaviour, self-discipline and respect;
- to encourage and reward positive behaviour;
- to outline a system of fair and appropriate sanctions which is applied consistently to all students;
- to prevent bullying

## Conduct around the academy:

- Move around the academy in a sensible, calm, courteous and appropriate manner.
- Be polite and helpful to all visitors to the school.
- Respect the rights of others to use all areas of the academy.
- Never drop litter. Always keep the academy site, dining rooms, halls, classrooms and corridors tidy.
- Never bring in or use cigarettes, alcohol, and illegal substances. This is strictly forbidden. Dangerous items such as matches, lighters, knives and aerosols must not be brought onto the academy site under any circumstances.
- Never use personal earphones/headphones around the academy site.
- Mobile phones are banned in the academy. Phones must be turned off and kept in bags at all times or placed in lockers for safe keeping. Failure to conform to this request will lead to confiscation of the phone. Confiscated phones will be available for collection at 3pm – 4pm from Reception by a parent or another designated adult.
- Eat and drink in the designated eating areas (dining hall and outside areas). Eating and drinking (apart from water) is forbidden in lessons.
- Do not leave the school site without permission. Students or visitors who need to arrive or leave the academy during lesson times must check in and/or out at the main reception.
- Arrive before 8:35am. Late students must sign in at reception and will receive a break time detention. Students who forget their break time detention will complete 20 minutes after school the same day. Neither parental consent, nor advance notice is required for detentions. However, we will always endeavour to contact parents in advance of the detention via class charts.
- Students or visitors who need to arrive or leave the Academy during lesson times must check in and/or out at the main reception.
- The academy uniform should be worn correctly at all times. Repeated failure to comply will lead to a break time detention.
- Coats are not to be worn around the academy. They must be put in lockers at the start of the school day.
- Be cautious and aware of the dangers of the mezzanine areas.

## Conduct in lessons

**No pupil has the right to disrupt the learning of others. Teachers will have disruption free classrooms in which they can teach and pupils will have disruption free classrooms in which they can learn.**

Class teachers apply a consistent approach to classroom behaviour management which provides students with the opportunity to self-correct their conduct. Appropriate behaviour referral ensures that the majority of well-behaved students continue to be taught effectively by removing individuals who repeatedly disrupt the learning of others. Teachers will log all behaviour incidents on Class Charts. Parents and carers can also check on Class Charts to monitor the behaviour (and homework) of their child

- Arrive on time to the lesson
- Line up quietly outside the classroom prior to the start of the lesson
- Enter the classroom calmly as directed by a member of staff

- Sit silently whilst the register is taken
- Listen in silence whilst the member of staff leading the lesson speaks
- Raise their hand to ask a question without calling out
- Work exceptionally hard without disrupting any other student learning

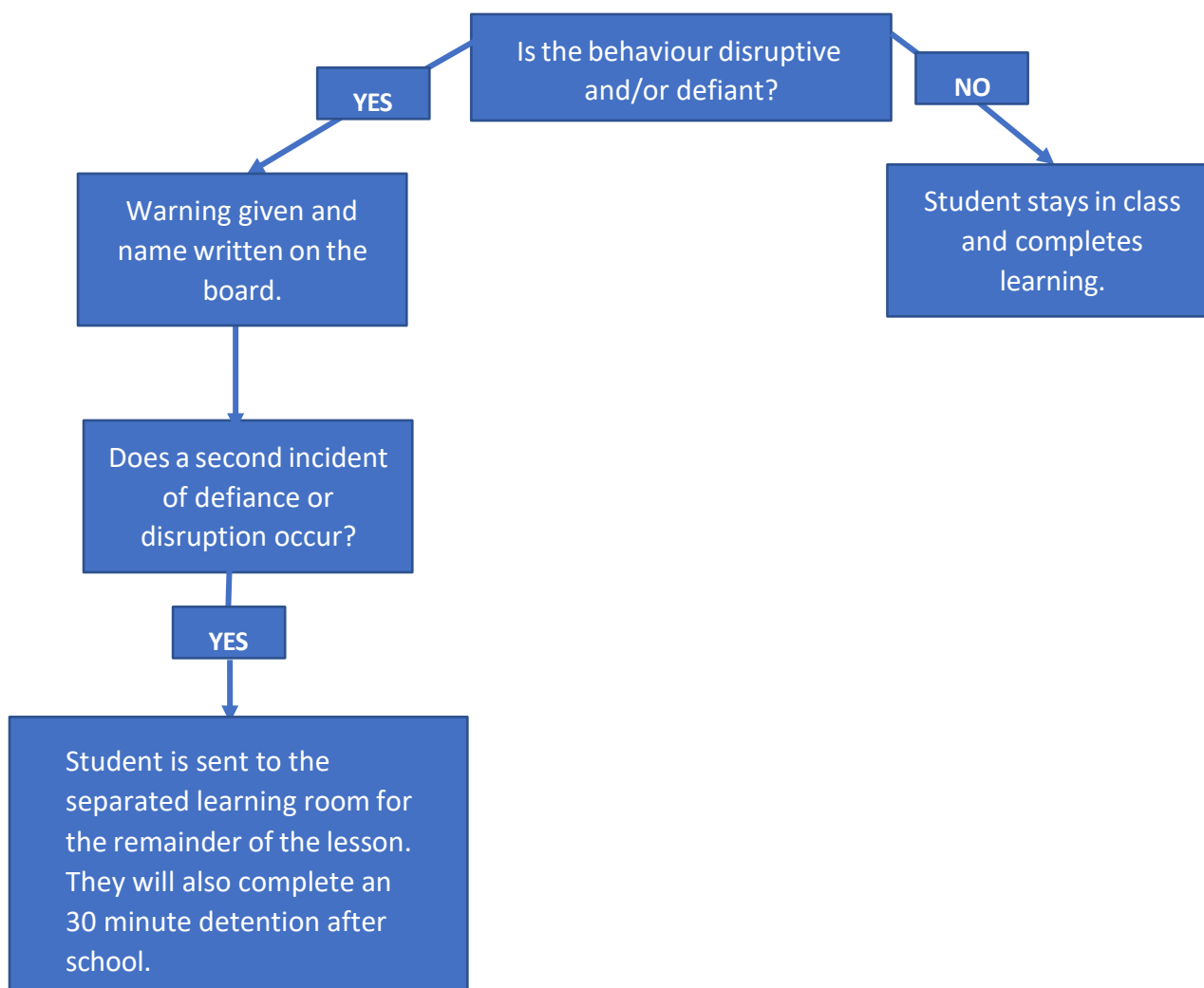
If a student fails to meet any of these simple expectations, they will receive a formal warning.

The second time during a lesson that a student fails to meet these expectations they will be sent to the Separated Learning room or buddied with a different member of staff for the remainder that lesson. The student will also incur a 30-minute detention at the end of the school day.

Failure or refusal to go to the Separated Learning room will result in one-day out of lessons on school site. Work will be provided for the student to complete in silence for that day.

If a student is sent out of the learning, the member of staff who sent the student out will meet with the student at the end of the day for a 'Restorative Conversation' where they will be made aware of what they did wrong, why it disrupted learning and what needs to be done differently next lesson. Same day detentions are the key part of the process as it allows the restorative conversation to take place and the student to come into school the next day looking forward to that teachers lesson. If a teacher is unable to have the restorative conversation on the same day then they will find the student at a later date.

#### Behaviour management flow chart:



## **Behaviour out of school**

Students are expected to demonstrate a high standard of conduct on the journey to and from school as each person is an ambassador for our academy.

### Students are expected to:

1. To arrive at school and leave school in full uniform
2. To use the traffic lights and crossings where possible to cross the road safely
3. To use the cycle lanes/pedestrian zones safely
4. To take any litter home and dispose of it properly
5. To respect our neighbours and all local residents

### Sanctions for behaviour offsite

Where students behaviour offsite brings the academy into disrepute or falls below the standards expected in other ways, the academy may apply sanctions in line with the guiding principles in this document. The academy's right to do this is outlined in the government document, "Behaviour and discipline in schools", available from the government website. These sanctions may include detentions or exclusions.

## **Rewards:**

The academy recognises that praise and reward are always the most powerful of motivational tools. As such, all staff actively seek opportunities to praise and reward students on a daily basis. A tiered approach is adopted towards rewards and rewards can be earned for attendance, behaviour and achievement.

House celebration assemblies are conducted at the end of every half term and students' efforts are recognised and rewarded on both an individual and House basis.

We use the following rewards to recognise the value of pupils' achievements, progress, effort and leadership within the academy:

- Achievement points – these are recorded on Class Charts.
- Attendance rewards
- Best behaviour reward
- Outstanding homework
- Achievement and effort subject rewards

## **Sanctions:**

It is recognised that, at some point, some students will – either intentionally or unintentionally – fall short of the academy's expectations. In such circumstances, students are expected to take responsibility for their actions and make amends, both through their words, and more importantly, through their actions.

## Detentions:

Government guidance is that neither parental consent, nor advance notice is required for detentions. However, we will always endeavour to contact parents in advance of the detention via class charts.

Class teacher detentions may be given at the following times:

- during morning break
- during lunch time
- after school

Class teachers should not issue 'whole class' detentions, as it will always be the case that some students are blameless and undeserving of a sanction.

## Community Service

As an alternative to detention, students may be issued with community service tasks. These may include cleaning, litter-collecting, cleaning desks or room-tidying. Community Service will typically be given for infringements with littering and for eating outside the designated eating areas.

## Confiscation

A member of academy staff may confiscate a pupil's property as a disciplinary penalty, where reasonable to do so.

Academy staff can seize any item, however found, which they consider harmful or detrimental to school discipline.

The following categories of items are banned and will be confiscated if seen at any time on the academy site...

- An item which poses a threat to others, e.g. a knife, laser pen etc;
- An item which poses a threat to good order for learning, e.g. a mobile phone;
- An item which poses a health or safety threat, e.g. items of jewellery worn during PE;
- An item which is counter to the ethos of the academy, e.g. material which might cause tension between one ethnic group and another;
- An item which is illegal for a child to have, e.g. racist or pornographic material.

Confiscated items may be returned at the end of the lesson or end of the day, if handed over without argument. Certain confiscated items will not be returned to the student but either disposed of or returned to a parent.

Students may be searched to ascertain whether they are in possession of banned items. There will always be two members of staff present during a search and this will be limited to outer garments and bags.

### Suspension:

In extreme circumstances of disciplinary breakdown, the sanction of suspension will be used. There are times when a suspension is avoided through the use of a suspension reduction plan (SuRP) at another Cabot Learning Federation academy. This allows the student to complete their work with the support of CLF staff away from WHA. If a student is suspended, the parents will be informed as soon as practicable, initially by telephone and then by letter. Parents must meet with a member of SLT, Head of Year or Deputy Head of Year before a student can return to class following a suspension. The duration of a suspension may range from one half day to five consecutive days in length.

Examples of student behaviour likely to lead to a suspension:

- refusal to accept the normal discipline of the academy;
- abusive language towards a member of staff;
- physical violence towards another student or member of staff;
- serious harm to the reputation of the academy through grossly irresponsible behaviour outside the academy;
- persistent bullying or intimidation of another student;
- racist language or other discriminatory behaviour;
- dangerous behaviour such as throwing an item over the balcony

### Permanent Exclusion:

The academy will not hesitate to permanently exclude a student who has proved, over the long term or through an outrageous single act, to be beyond the control of the academy. Extensive efforts are made to improve behaviour to avoid permanent exclusion. In the case of a single exceptional transgression of the academy's rules, the academy reserves the right to permanently exclude a student without a programme of support being provided. We hope and expect that this sanction will only be used extremely rarely.

These incidents include, but are not limited to:

- Verbal or Physical abuse
- Violent or dangerous behaviour
- Exam Misconduct
- Possession or bringing a weapon or dangerous item on to the school site
- Possession of other prohibited items
- Malicious setting off of the fire alarm
- Homophobic, racist, sexist or disablist language



- Smoking/vaping/alcohol/drugs
- Fighting, harassment or bullying
- Threatening or anti-social behaviour
- Damage to property

## **Bullying**

The academy takes bullying very seriously and has a separate policy covering this. See: *AntiBullying Policy*

## **Homework**

We believe in the importance of homework. It enables students to practice work individually, and to build the important skills of organisation and resilience. It is compulsory for all students.

Homework is due on the day and the time that the classroom teacher dictates. We will generally, where possible, allow a reasonable amount of time for completion to allow the student to seek further clarification, in case they don't understand how to proceed, or to come to Homework Club, in order to receive further support.

Homework is set on Class Charts so that parents are able to check and support the student.

### **Homework sanctions**

If homework is not handed in on the required date and time, there will be a 60 minute after-school detention on the following day. However, if the homework is submitted before breaktime the next day then the detention will be reduced to 30 minutes. If a student have 2 30 minute homework detentions on the same night then they will complete a 60 minute detention.