

Uniform & Equipment



Uniform and Equipment

We value our school uniform and ask parents to ensure their child leaves home looking smart and in the correct uniform. *(Please see following pages for further explanation).*

The Academy uniform consists of:

- WHA blazer with school logo
- Plain white shirt
- Plain black **tailored trousers** or plain black, tailored knee-length skirt. *No lycra, clingy/skinny trousers or skirts*
- WHA Tie
- WHA navy blue V-neck (optional)
- Plain black shoes or trainers *(must be all black with black laces, no white or coloured markings or logos)*
- Plain black socks
- A plain black headscarf if worn for religious purposes

Students can also wear:

- A watch, small stud earrings (ONLY one in each ear), one ring and one small pendant – *which must not be visible and must be able to be removed for PE.*
- No other jewellery may be worn.
- No facial piercings – including but not limited to: tongue, lip, nose or eyebrow piercings. We expect any ear piercings to take place at the start of school holidays to avoid potential health and safety issues around removal for PE.
- If make-up is worn, it should be discreet.

Students must **NOT** wear:

- Outside coats, hoodies or jackets inside the building. These should be stored in lockers.
- Gloves, hats or scarves (**unless for religious purposes**)
- Facial piercings, including tongue, eyebrow, lip and nose piercings
- Rings or bracelets of any description (Where these are part of a religious observance, written permission is required from a student's Head of Year).

PE Kit: to be purchased from NK Sports

- (required) WHA Multi-sport reversible top
- (required) WHA PE Polo shirt
- (required) Dark blue/Navy Shorts
- (optional) WHA Training pant
- (optional) WHA Hoodie
- (optional) WHA Fleece

From any convenient source:

- (required) Dark blue/navy PE Socks
- (optional) Dark blue/navy Skort

Students will also need:

- Shin Pads
- Mouth guard (recommended)
- Scrum cap–IRB approved (recommended for rugby)
- Trainers and rugby or football boots (moulded not astroturf boots)

Trainers and boots need to be taken to all PE Lessons

In line with guidance from the British Medical association and the Highway code, all WHA students are expected to wear a helmet when cycling to school.

Uniform and Equipment

The Academy uniform consists of:

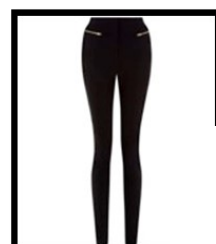
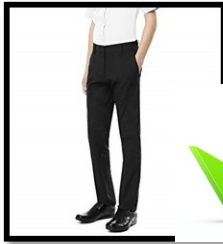
- School blazer worn with sleeves at full length (sleeves should not be rolled up)
- White shirt
- WHA navy blue V-neck (optional)
- WHA tie



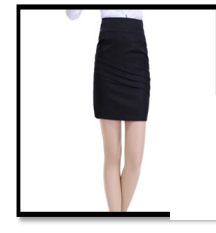
- **Black tailored trousers only**

Trousers should **NOT** be:

- Elasticated, stretchy material or leggings
- Chinos
- Denim of any sort



Black skirt – tailored, knee length (stretch tube skirts are not allowed).



Black tailored shorts may be worn at any time of year.



In line with guidance from the British Medical association and the Highway code, all WHA students are expected to wear a helmet when cycling to school.